

# University of Illinois at Chicago— Taking CIFM to New Heights

## Case Study



*“ARCHIBUS/FM was the only Facility Management software available that could handle the amount of data we were going to input.”*

*—Scott DeBlaze, Assistant Director of the Office of Facility Planning and Space Analysis, University of Illinois at Chicago*

The University of Illinois was chartered in 1867 under the provisions of the Federal Land Grant Act signed into law by President Abraham Lincoln in 1862. This law provided each state with public land to be used to establish and support at least one college that would be dedicated to educating its citizens in agriculture, home economics, mechanical arts, and other practical professions. The land grant model focuses on three activities: teaching, research, extension.

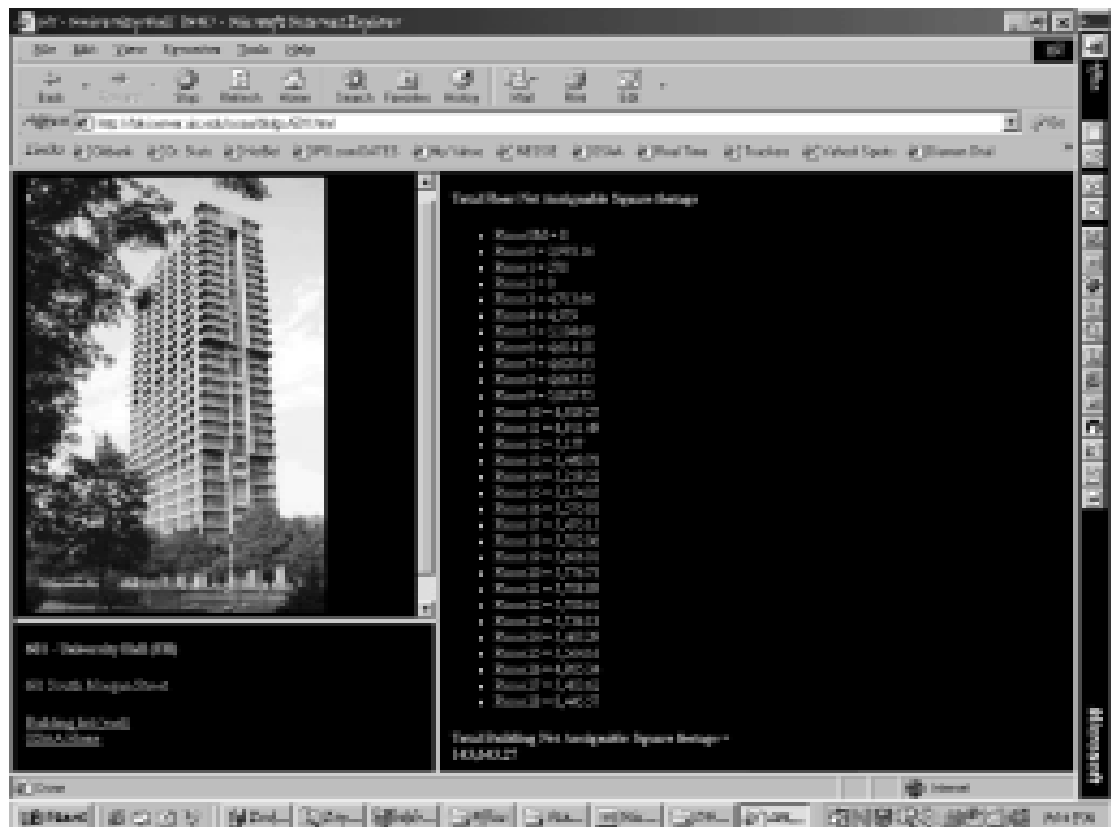
## Updating the Land Grant Philosophy to Include Urban Dwellers

The University has three campuses and a combined total of 66,000 regular students, 17,000 continuing education students, 5,100 faculty, and almost 23,000 employees. It is the seventh largest employer in Illinois.

The Chicago campus was created by the merger of the Chicago Circle and Medical

Center campuses in 1982. It has a significant share of the student body—with 25,000—and provides employment for 11,890 people.

Currently, the Chicago campus has a total of 105 buildings, all of which are ARCHIBUS/FM-managed; it is, however, teeming with construction activity; new buildings are being constructed while old buildings are being remodeled. \$68 million was recently earmarked by the State of Illinois to assist UIC in the construction of the new College of Medi-



The Office of Facility Planning and Space Analysis is in the process of gathering infrastructure data that would be used to create data sheets, such as this, which would document when roofs, exterior walls, windows, etc. need to be replaced.

cine building which is expected to carry a price tag of about \$100 million.

### Never a Dull Moment

The Office of Facility Planning and Space Analysis considers everyone at the University to be a customer, though their regular interactions are primarily with the academic research, hospital, clinical and administrative units at the University.

Because the pursuit of research dollars is never-ending, and because the University takes up 12,000,000+ gross square feet of prime urban real estate, departments frequently need to know exactly how

much space they have at any given time. Before the implementation of ARCHIBUS/FM eight years ago, providing reports of any type was extremely difficult. As Scott DeBlaze, Assistant Director of the Office of Facility Planning and Space Analysis, says, "We had limited information in a digital format. Exporting information to the users was not possible, and paper copies of all building data were transmitted via mail or fax. Floor plan and data information were added with a calculator or on spreadsheets. Overall reporting capabilities were dependent on an obsolete legacy system that required extensive manual work." ARCHIBUS/FM provided the reporting capabilities that DeBlaze's team expected, and he hopes that this "will allow us to link all campuses in the future."

The reporting capability provided by ARCHIBUS/FM has also assisted individual units in their own decision-making processes. Examples of these reports include Medicare/Medicaid and annual State of Illinois budget

reports. This is particularly important for an urban research university for which space means dollars, literally.

University units receive reimbursements from the state for space that is used for research; these reimbursements can involve a lot of money, so it is important for departments seeking reimbursements to be certain just how much and what type of space is being used for research.

The considerations are the same when seeking research funding. Knowing how much space is available, the nature of that space and what kind of research can be done there makes the difference between winning and losing grant money.

### Information Sharing is Key

UIC's ARCHIBUS/FM Consultant, ARCHIBUS Business Partner, BRG, helped to create an object database for the Office of Business Affairs (OBA) that enables OBA to tap into the ARCHIBUS/FM database, export it into a format which the OBA system can upload and then use it in the indirect cost reimbursement process.

DeBlaze reports that University of Illinois at Chicago, University of Illinois at Urbana-Champaign, and University of Illinois at Springfield are thinking of consolidating the campus databases into a single location. Such a move is likely to further improve the integrity of the data and would reduce duplication of efforts in maintaining data University-wide.

### Case Study



*"ARCHIBUS/FM has helped us streamline the process of data gathering and maintenance and its reporting. It has also helped with Space Planning and Space Assessment in buildings throughout our campus."*

*—Scott DeBlaze, Assistant Director of the Office of Facility Planning and Space Analysis, University of Illinois at Chicago*



## VITAL STATISTICS

#### ORGANIZATION

University of Illinois  
Chicago, IL

#### FACILITIES FACTS

105 buildings (all ARCHIBUS/FM-managed); 12,000,000+ GSF

#### APPLICATION MODULES

ARCHIBUS/FM 10 Space

#### IMPETUS FOR AUTOMATING

Overall reporting capabilities were problematic; information was not in a digital format and was very burdensome to maintain.

#### PLANS FOR FUTURE USE

Possible combining of the databases of all three campuses into one; expansion into additional modules.

#### BENEFITS GAINED WITH CAFM/CIFM

Precise and expeditious reporting; improved data integrity; improved space planning and assessment throughout campus.

#### BUSINESS PARTNERS WORKING WITH THE UNIVERSITY OF ILLINOIS

Business Resource Group (BRG).

